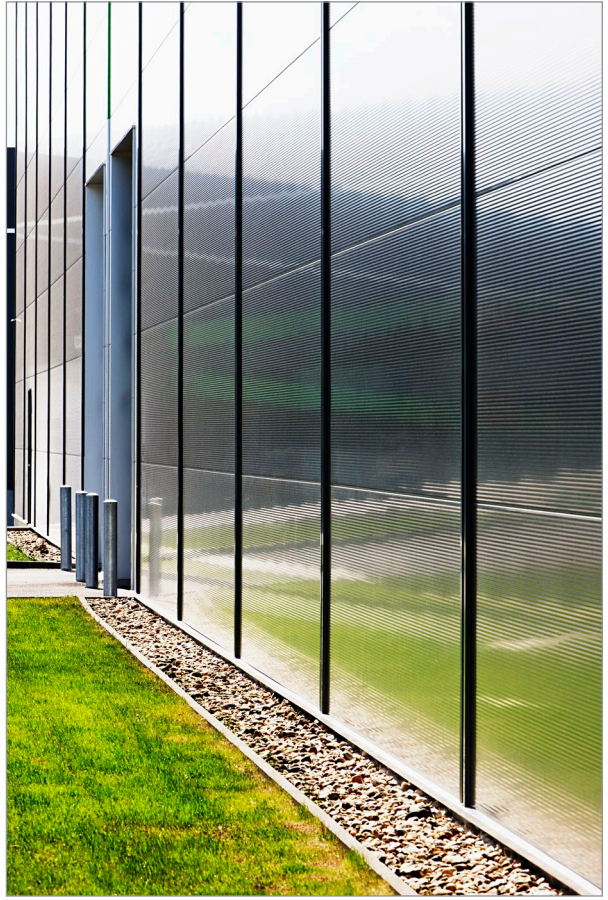


COMPANY PROFILE

Trimo is a one of the leading European companies developing original and complete building envelope solutions in the areas of fire-proof façades and roofs.

Located in Trebnje, Slovenia, Trimo sells products and services under its own brand cross more than 100 countries worldwide and has a sales network in almost 30 countries. We are a reliable, trustworthy global supplier of innovative, flexible, energy-efficient and environmentally friendly architectural building solutions.

Our customers are at the heart of our operations as we deeply understand their needs and provide them with the highest level of service and product quality. The list of outstanding and reputable partners such as Airbus, London Heathrow, Nestle, Philips, DHL, Porsche, IKEA, Prologis, Mercedes Benz, Coca Cola and many others is a true reflection of our passion, responsibility and commitment to our work.



Mitglied des:
IFBS Industrieverband für Bausysteme im Metalleichtbau

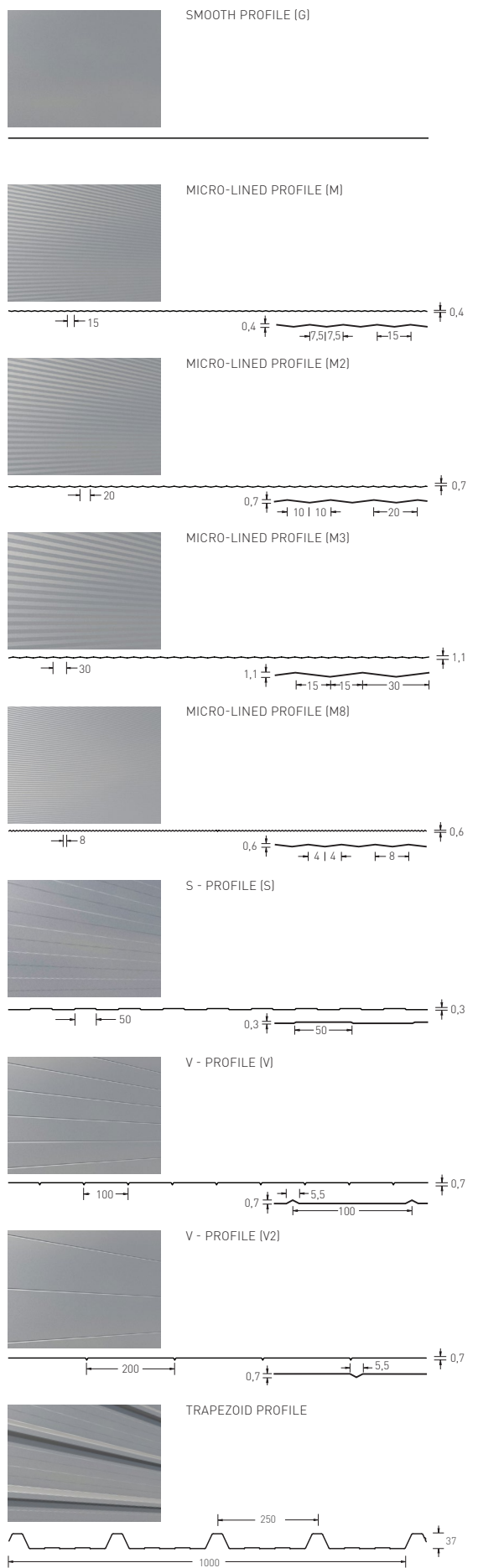
TRIMO

TRIMO D.O.O.
PRIJATELJEVA CESTA 12,
8210 TREBNJE, SLOVENIA
T: +386 (0)7 34 60 200
F: +386 (0)7 34 60 127
TRIMO@TRIMO-GROUP.COM
WWW.TRIMO-GROUP.COM

Trimo Group holds full copyrights on the information and details provided on this media, therefore any unauthorized reproduction and distribution is strictly prohibited. Professional care has been taken to ensure that information/details are accurate, correct and completed and not misleading, however Trimo, including its subsidiaries, does not accept responsibility or liability for errors or information, which is found to be misleading. Information/details on this media are for general purposes only. Use of it is on your own initiative and responsibility for compliance with local laws. Any deviations in details and project solutions are user responsibility. In no event, will we be liable for any loss or damage including without limitation, indirect or consequential loss or damage, or any loss or damage whatsoever arising from loss of profits arising out of or in connection with the use of this media. All information issued by Trimo Group is subject to continuous development and information/details contained on this media are current at date of issue. It is user's responsibility to obtain most up-to-date information from Trimo when information/details are used for project. The last version of the document is available on www.trimo-group.com. Latest version of published document in English language prevails over other translated language documents.

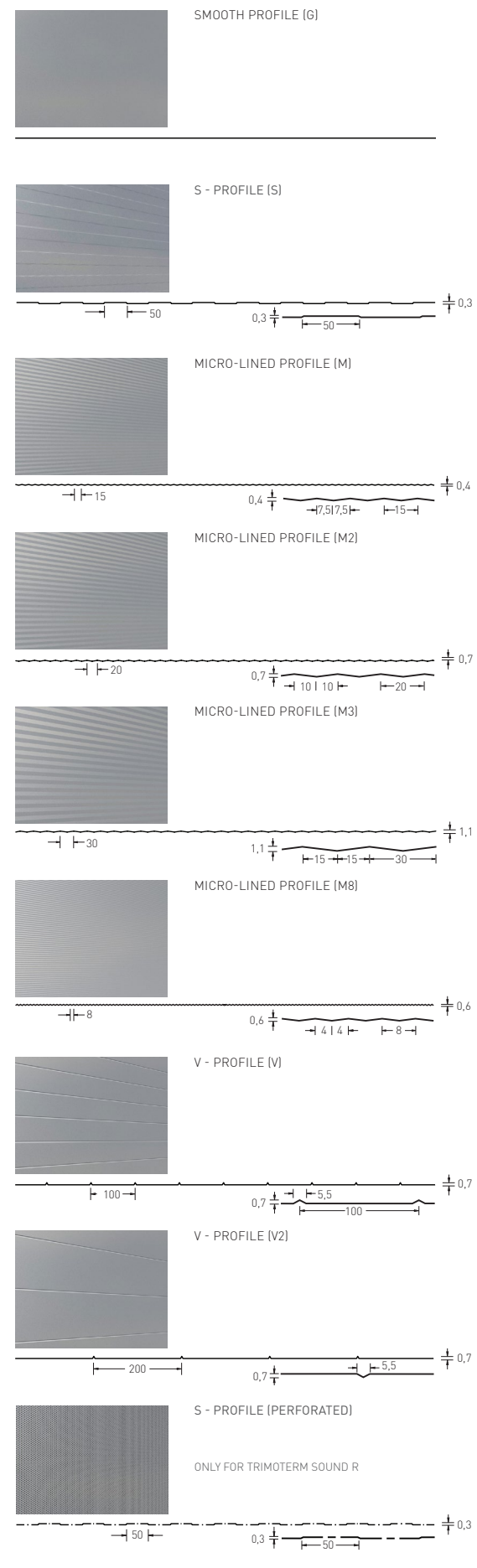
For information about the delivery of panels see Trimo's General conditions (<https://www.trimo-group.com/en/general-conditions-of-sales>).

PROFILE TYPES - EXTERNAL



G, M, M2, M3, M8, S, V, V2, TRAPEZOID

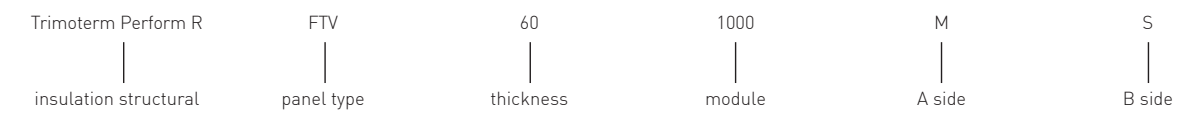
PROFILE TYPES - INTERNAL



G, S, M, M2, M8, V, V2, S (PERFORATED)

PANEL MARKING

Panel marking (Trimoterm Perform R FTV-60/1000 MS)



SPECIFICATION TEXT:
Trimoterm Perform R FTV-80/1000 MS
external: 0,55 mm SP 25 µm ANTHRACITE
internal: 0,50 mm SP 25 µm GREY WHITE

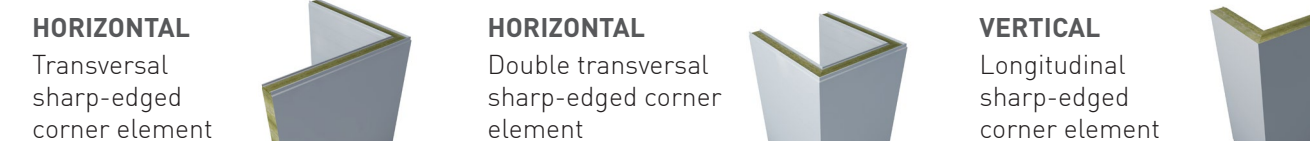
COLOURS

WHITE (R9010)		SILVER (R9006)	
GREY WHITE (R9002)		DARK SILVER (R9007)	
CREAM (R1015)		TRAFFIC RED (R3020)	
LIGHT GREY (R7035)		MOSS GREEN (R6005)	
AGATE GREY (R7038)		GENTIAN BLUE (R5010)	
TELE GREY 2 (R7046)		ANTHRACITE (R7016)	

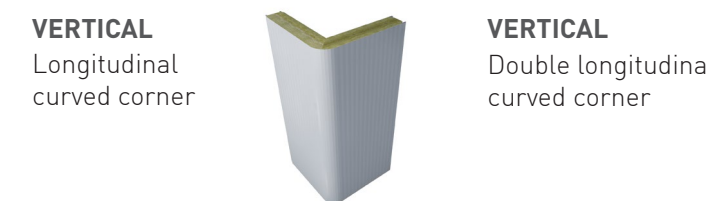
Colours may slightly deviate due to different monitors and prints compared to original colours. Trimo can send you a metal swatch upon request. Colour range does not in any case define delivery terms or any other terms of specific skin colour. Colour range presented shows only a fraction of most usable colours within the variety of colours available.

CORNER ELEMENTS

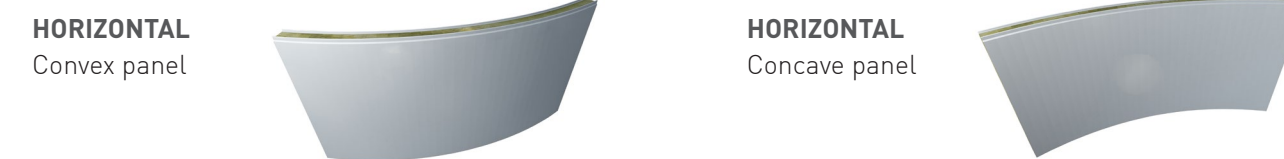
SHARP-EDGED CORNER ELEMENTS



ROUNDED CORNER ELEMENTS



SEGMENTED PANELS



NOTES: The internal and external Trimoterm profiles seen in this document present the main range of profile options. Some combinations are mutually exclusive depending on the type of profile and product. For the approval of the requested profile combination please contact Trimo's technical support team. The arrangement of V profile (and all others) typically starts on the middle (centred) of panel steel sheet prior to forming stage. Module end, groove and the distance from the panel edge depends on Trimoterm panel module and may vary. Any other V profile arrangements are declared as non-standard and a subject of individual order. The arrangement of S profile typically starts on the middle (centred) of the Trimoterm panel module. Module end and the distance from the panel edge depends on Trimoterm panel module and may vary. Smooth profile (G) - to ensure an optimal smooth surface for building façades external side of the panel 0,7 mm steel sheet thickness must be used in lieu of standard 0,55 mm.

Published by: TRIMO d.o.o., EN 01/2024



TRIMO TRIMOTERM

TRIMOTERM TECHNICAL SPECIFICATION

BRAND, PRODUCT FAMILY, PRODUCT TYPE	RENDER	JOINT	MAX. ACHIEVABLE FIRE RESISTANCE [EN 14509]**													U THERMAL TRANSMITTANCE [W/m²K]**													AIRBORNE SOUND INSULATION R _w [C _c Tr] dB [EN 14509]													WATER PERMEABILITY [EN 14509]													WEIGHT [Fe 0,55/0,5] [kg/m²]													REACTION TO FIRE [EN 13501-1]	COMBUSTIBILITY OF MATERIAL CORE [EN 13501-1]	WIDTH (mm)	LENGHT (m)	BRAND, PRODUCT FAMILY, PRODUCT TYPE	CERTIFICATES																																																																							
			PANEL THICKNESS (mm)													PANEL THICKNESS (mm)													PANEL THICKNESS (mm)													PANEL THICKNESS (mm)													PANEL THICKNESS (mm)																																																																																									
			60	80	100	120	133	150	172	200	220	240	250*	50	60	80	100	120	133	150	172	200	220	240	250*	60	80	100	120	133	150	172	200	220	240	250*	50	60	80	100	120	133	150	172	200	220	240	250*	50	60	80	100	120	133	150	172	200	220	240	250*																																																																																				
POWER	T	FTV (façade panel with standard fixing)	-													n/a													30 [-2,-4]													Class A (1200Pa)													n/a													A2-s1, d0 (not valid for PVC and PVCF coating)	Mineral wool, non combustible Class A1	600-1200	up to 14	POWER	T	FTV (façade panel with standard fixing)	-													n/a													30 [-2,-4]													Class A (1200Pa)													n/a													CE EN 14509	LPCB	Cert. No. 650a to LPS 1208 Cert. No. 650b to LPS 1181 Cert. No. 650d to LPS 1181 Cert. No. 650e to LPS 1175	FM APPROVED	Deutsches Institut für Bautechnik Z-19.52-2457 Z-10.49-625
			FTV HL (façade panel with hidden fixing)	-													n/a													30 [-1,-3]													Class A (1200Pa)													n/a																			CE EN 14509	LPCB	Cert. No. 650a to LPS 1208 Cert. No. 650d to LPS 1181 Cert. No. 650e to LPS 1175	FM APPROVED	Deutsches Institut für Bautechnik Z-19.52-2457 Z-10.49-625																																																																	
				SNV (roof panel)	-													n/a													-													Class B (900Pa)													n/a																							CE EN 14509	LPCB	Cert. No. 650a to LPS 1208 Cert. No. 650b to LPS 1181	FM APPROVED	Deutsches Institut für Bautechnik Z-10.49-625																																																												
	S	FTV (façade panel with standard fixing)	on request													n/a													31 [-2,-3]													Class A (1200Pa)													n/a																		CE EN 14509	LPCB	Cert. No. 650a to LPS 1208 Cert. No. 650b to LPS 1181 Cert. No. 650d to LPS 1181 Cert. No. 650e to LPS 1175	FM APPROVED	Deutsches Institut für Bautechnik Z-19.52-2457 Z-10.49-624																																																																			
			FTV HL (façade panel with hidden fixing)	on request													n/a													31 [-1,-3]													Class A (1200Pa)													n/a																						CE EN 14509	LPCB	Cert. No. 650a to LPS 1208 Cert. No. 650d to LPS 1181 Cert. No. 650e to LPS 1175	FM APPROVED	Deutsches Institut für Bautechnik Z-19.52-2457 Z-10.49-624																																																														
		R		FTV (façade panel with standard fixing)	-													n/a													30 [-2,-4]													Class A (1200Pa)													n/a																CE EN 14509	LPCB	Cert. No. 650a to LPS 1208 Cert. No. 650b to LPS 1181 Cert. No. 650d to LPS 1181 Cert. No. 650e to LPS 1175	FM APPROVED	Deutsches Institut für Bautechnik Z-19.52-2457 Z-10.49-624																																																																			
FTV HL (façade panel with hidden fixing)	-													n/a													30 [-1,-3]													Class A (1200Pa)													n/a													CE EN 14509	LPCB	Cert. No. 650a to LPS 1208 Cert. No. 650d to LPS 1181 Cert. No. 650e to LPS 1175	FM APPROVED	Deutsches Institut für Bautechnik Z-19.52-2457 Z-10.49-624																																																																										
	C		SNV (roof panel)	-													n/a													32 [-1,-4]****													Class B (900Pa)													n/a															CE EN 14509	LPCB	Cert. No. 650a to LPS 1208 Cert. No. 650b to LPS 1181	FM APPROVED	Deutsches Institut für Bautechnik Z-10.49-550																																																																					
FTV (façade panel with standard fixing)		on request													n/a													31 [-2,-3]													Class A (1200Pa)													n/a													CE EN 14509	LPCB	Cert. No. 650a to LPS 1208 Cert. No. 650b to LPS 1181 Cert. No. 650d to LPS 1181 Cert. No. 650e to LPS 1175	FM APPROVED						Deutsches Institut für Bautechnik Z-10.49-550																																																																				
		FTV HL (façade panel with hidden fixing)	on request													n/a													31 [-1,-3]													Class A (1200Pa)													n/a																CE EN 14509	LPCB	Cert. No. 650a to LPS 1208 Cert. No. 650d to LPS 1181 Cert. No. 650e to LPS 1175	FM APPROVED	Deutsches Institut für Bautechnik Z-10.49-550																																																																					
SOUND	R		FTV (façade panel with standard fixing)	-													n/a													30 [-2,-3]													Class A (1200Pa)													n/a													B s1 d0	1000						R	FTV (façade panel with standard fixing)	-													n/a													30 [-2,-3]													Class A (1200Pa)													n/a													CE EN 14509	LPCB
		FTV HL (façade panel with hidden fixing)		-													n/a													31 [-2,-3]													Class A (1200Pa)													n/a															CE EN 14509	LPCB	Cert. No. 650a to LPS 1208 Cert. No. 650d to LPS 1181 Cert. No. 650e to LPS 1175	FM APPROVED	Deutsches Institut für Bautechnik Z-10.49-550																																																																					
			SNV (roof panel)	-													n/a													32 [-1,-4]****													Class B (900Pa)													n/a													CE EN 14509								LPCB	Cert. No. 650a to LPS 1208 Cert. No. 650b to LPS 1181	FM APPROVED	Deutsches Institut für Bautechnik Z-10.49-550																																																																
	FTV HL (façade panel with hidden fixing)	-													n/a													31 [-1,-3]													Class A (1200Pa)													n/a													CE EN 14509	LPCB			Cert. No. 650a to LPS 1208 Cert. No. 650d to LPS 1181 Cert. No. 650e to LPS 1175	FM APPROVED	Deutsches Institut für Bautechnik Z-10.49-550																																																																							
		FTV HL (façade panel with hidden fixing)		-													n/a													31 [-1,-3]													Class A (1200Pa)													n/a																		CE EN 14509	LPCB						Cert. No. 650a to LPS 1208 Cert. No. 650d to LPS 1181 Cert. No. 650e to LPS 1175	FM APPROVED	Deutsches Institut für Bautechnik Z-10.49-550																																																													
	SNV (roof panel)		-													n/a													32 [-1,-4]****													Class B (900Pa)													n/a													CE EN 14509	LPCB		Cert. No. 650a to LPS 1208 Cert. No. 650b to LPS 1181	FM APPROVED	Deutsches Institut für Bautechnik Z-10.49-550																																																																							
SNV (roof panel)		-													n/a													32 [-1,-4]****													Class B (900Pa)													n/a													CE EN 14509			LPCB				Cert. No. 650a to LPS 1208 Cert. No. 650b to LPS 1181	FM APPROVED	Deutsches Institut für Bautechnik Z-10.49-550																																																																				
	SNV (roof panel)	-													n/a													32 [-1,-4]****													Class B (900Pa)													n/a														CE EN 14509	LPCB		Cert. No. 650a to LPS 1208 Cert. No. 650b to LPS 1181	FM APPROVED	Deutsches Institut für Bautechnik Z-10.49-550																																																																							

*** FOR FRENCH OR GERMAN MARKET CONSULT TRIMO'S TECHNICAL SUPPORT TO COMPLY WITH REGIONAL LEGISLATION.
 ** REQUEST FOR FIRE RESISTANCE MUST BE CLEARLY SPECIFIED BY CUSTOMER.
 EXACT FIRE RATINGS WITH REGARDS TO SYSTEM, ORIENTATION AND SPAN CAN BE FOUND UNDER THE CERTIFICATION SUBPAGE ON TRIMO WEB PAGE:
<https://www.trimo-group.com/en/downloads/certificates-and-data-sheets/certificates>

*** VALUES VALID ONLY FOR FEATURED APPLICATION IN THE CENTRE OF PANEL
 **** ACCORDING TO EN ISO 140-3 AND EN ISO 354